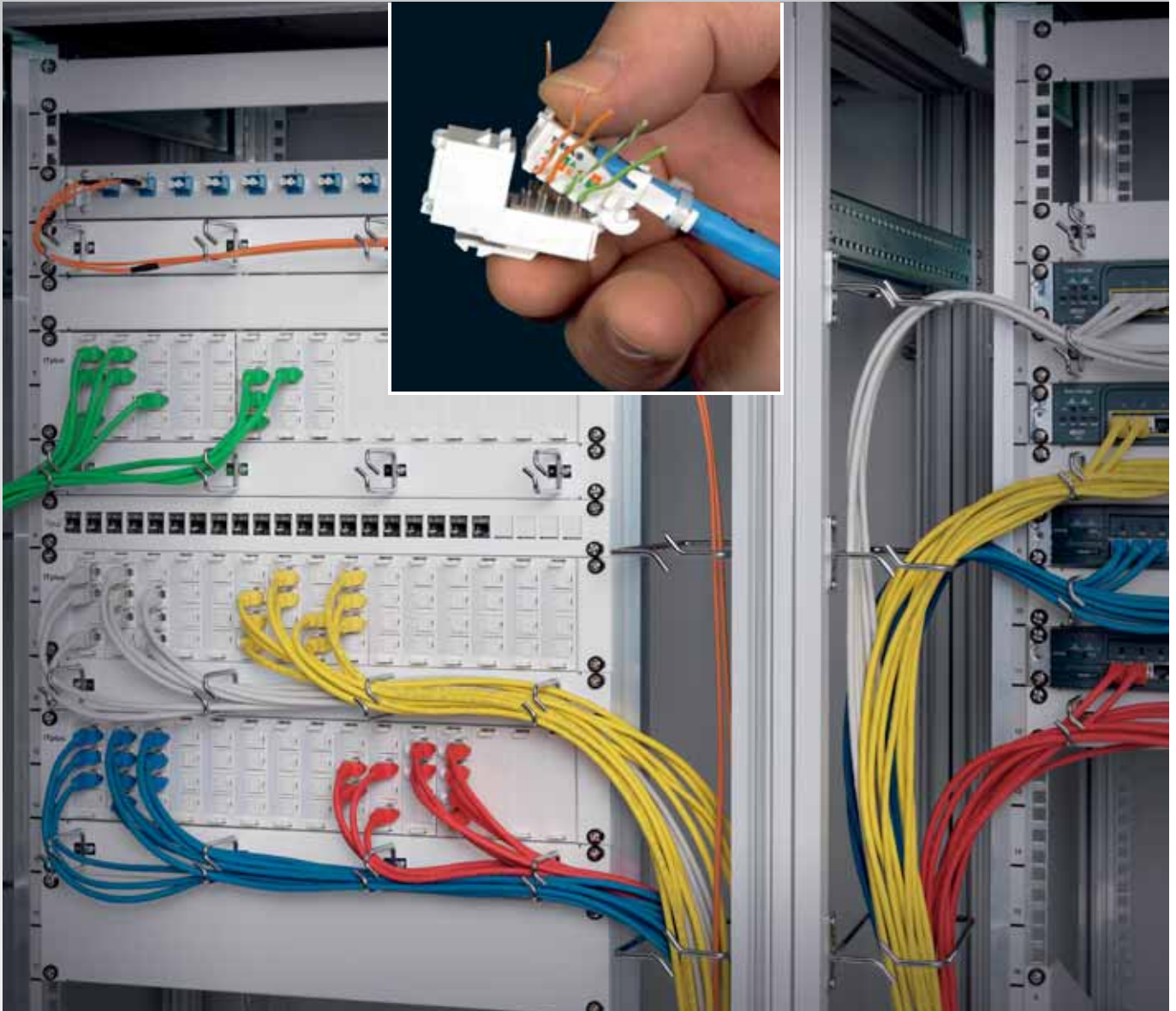




ITplus®

The 10G wiring system



Contents	Page
ITplus® wiring system	2–3
Installation cables	4–5
Distribution equipment	6–7
Connecting technology	8
Connecting boxes	9–10
Patch cables	11–12

Elbro AG

Swiss Technology Company
Gewerbestrasse 4

CH-8162 Steinmaur/Switzerland

Telefon: +41 (0)44 854 73 00

Telefax: +41 (0)44 854 73 01

Internet: www.elbro.com

e-mail: info@elbro.com

The ITplus® 6A 10G wiring system from ELBRO combines 10Gb/s efficiency with safety, interference immunity and space optimization.

Based on the area of use the system is available as Cat.6 unshielded, 6A 10G with U/FTP or as 6A 10G with S/FTP wiring solution.

ITplus® 6A 10G represents the state of the art in Cat.6A wiring technology.

The product family fulfils or exceeds all requirements, including the Alien Crosstalk Parameter, of the recently ratified 10GBASE-T standard.

This solution was specially developed to deal also with complex and performance-critical applications of the future. Since the systems are available optionally as shielded or unshielded versions, they can be used equally in safety-critical areas, in environments with higher interference levels and also in general office environments.

Use of wiring systems	ITplus® 6 UTP	ITplus® 6A 10G U/FTP	ITplus® 6A 10G S/FTP
Home environment			
General office environment			
Specific office environment			
Industrial environment			
Computer centres			
Technical aspects			
Next (pair to pair)	comply with standards	comply with standards	increased system reserves
Alien X-Talk (port to port)	comply with standards	increased system reserves	highly increased system reserves
Space requirement for cables (diameter/cable)	6 mm	7.3 mm	7.4–7.8 mm
Immunity with respect to interference >30 MHz	low	high	very high
Shannon capacity (possible future applications)	functional	reserves	maximum reserves
Installation aspects			
Requirement for earthing concepts	Yes (NIV)	Yes (NIV, EN standards)	Yes (NIV, EN standards)
Installation duration (index)	100	105	115
Reserves for «Pass» in case of inspection measurements	sufficient	good	high
Weight of cables	45–50 kg/km	50–60 kg/km	60–70 kg/km
Radius of bend	ca. 49 mm	ca. 58 mm	ca. 61 mm

■ = Preferred, ■ = Possible, ■ = Possible, however not recommended

High port density – clearly grouped patch fields



60 ports on 2HE

ITplus® offers the optimal compromise between high port density and functionality. Up to 25% less space is needed in the distribution cabinets as compared with conventional modular systems. An example: While a conventional modular system in a 19" network cabinet with 42 units and the corresponding space for patch cables has space for 480 ports, ITplus® provides up to 600 ports in the same space. And this is possible without any restrictions in operation or organization, because the vertical arrangement of the ports means that the connectors are accessible at all times, also during operation.

Designation concept

A well-thought-out designation concept provides for better organization of operations. Each port can be designated individually with the available masters. This is the basis for efficient documentation of the network. Subsequent «patching», as well as expansions and modifications, can be carried out with the required security of not having to restrict operations even in case of manipulations on the distribution cabinet.





Coloured patch cables

Colours: a simple, helpful and logical tool for efficient network management. Assuming the corresponding rules have been created by the network administrator, different coloured patch cables can be used for different departments, floors, buildings and areas of application. This facilitates working on the network tremendously and provides for better overall organization. The work required for documentation and maintenance of the network is minimized.

Reliability and independence thanks to Keystone

Future flexibility

«Keystone» is a standard which uses standard cut-outs to enable snap-in mounting of different components in panels, boxes, etc. Keystone has developed very positively in the past few years; many manufacturers offer products that are compatible with Keystone. ITplus® has been optimized for Keystone from the very beginning. This guarantees a broad range of products and a high degree of compatibility, also with third-party and future systems.

State-of-the-art technology

High-performance patch cables

Finally there are patch cables with outstanding transmission properties even for short lengths. This is made possible by integrated wire guiding of the RJ45 plugs, which guide the middle pair to the contacts on a separate level. In a component test in accordance with 568-B.2, this results in an additional signal-to-noise ratio in the NEXT of more than 2.5 dB.

Pass for measuring instrument

ITplus® 6A 10G represents the state of the art in Cat.6A wiring technology. The result: maximum system reserves even with critical technical transmission parameters. The high-quality components were developed in Switzerland and manufactured by national and international partners. The certification was carried out by accredited independent test labs.

Installation without tools

Modular design

Thanks to the modular system, networks can be designed and constructed the way they are needed. Spare slots and grouping can be implemented individually. The installation of the individual modules requires no tools – they simply snap in. Of course, the earthing connection is fully integrated. In combination with the effective ITplus® connecting modules, you can save a great deal of time, which can have a major effect in the calculation of large-scale systems.

Captive dust protection

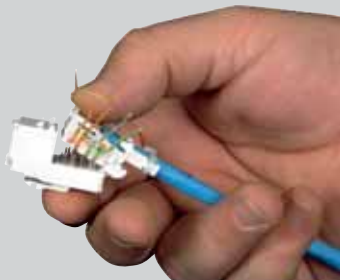
Repeatedly in demand: Captive dust protection ensures that high-quality gold contacts are not contaminated with dust or other accumulations during and after the construction phase.

Low overplugging time

ITplus® is currently the most effective overplugging system available. Unshielded systems in less than one minute per connection! Connections are established by means of the sequentially arranged contacts and require minimum force. When you hear the click, simply cut off the wire and you have finished. The wire guide ensures that the wire pairs of each connection are correctly overplugged.

Low module width of 16.5 mm

The ITplus® Cat.6A jack is only 16.5 mm wide. This means additional storage space for cables and compliance with the minimum radius of bend.





Installation cable Draka UC400 Cat.6

Data cable U/UTP up to 400 MHz

Cat.6 data cable with outstanding electrical and mechanical properties. Guaranteed thresholds in accordance with EN 50173-1, ISO/IEC 11801, EN 50288-6-1, EIA/TIA 568 B.2-1, IEC 61156-5.

Version	Unshielded, 4x2x0.56 mm	
Cable diameter	6.2 mm / AWG 23	
Sheath	Flame-resistant and halogen-free LSOH	
Attenuation (dB/100 m) @400 MHz	41.7	
Colour of outer sheath	Blue, RAL 5012	
Relative propagation velocity	67% / NVP 0.67	
Delivery quantity	500 m reel	1000 m reel
Article number	COU-11 020-5	COU-11 020-10
E-number	101 742 182	101 742 181
Certificates	3-P certification	

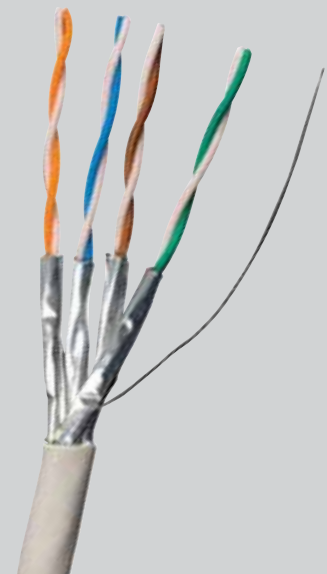


Installation cable Draka SILVERLINE TREND Cat.6A 10G

Data cable U/FTP up to 500 MHz (former designation FTP)

Cat.6A data cable with outstanding electrical and mechanical properties. Optimized shielding effect / cable diameter. Guaranteed thresholds in accordance with EN 50173-1, ISO/IEC 11801, EN 50288-6-1, IEC 61156-5, EIA/TIA 568 B.2-1.

Version	Foil shielded, 4x2x0.55 mm	
Cable diameter	7.3 mm / AWG 23	
Sheath	Flame-resistant and halogen-free LSOH	
Attenuation (dB/100 m) @500 MHz	43	
Colour of outer sheath	Gray, RAL 7035	
Relative propagation velocity	75% / NVP 0.75	
Delivery quantity	500 m reel	1000 m reel
Article number	STP-10 455-5	STP-10 455-10
E-number	101 772 019	101 772 009
Certificates	3-P certification	



Installation cable Draka SILVERLINE PREMIUM Cat.7

Data cable S/FTP up to 1200 MHz (former designation S/STP)

Cat.7 data cable with outstanding electrical and mechanical properties. Excellent shielding effect thanks to pair and braid shield.

Guaranteed thresholds in accordance with EN 50173-1, ISO/IEC 11801, EN 50288-4-1, IEC 61156-5.

Version	shielded, 4x2x0.55 mm	
Cable diameter	7.4 mm / AWG 23	
Sheath	Flame-resistant and halogen-free LS0H	
Attenuation (dB/100 m) @600 MHz	48,1	
Colour of outer sheath	Gray, RAL 7035	
Relative propagation velocity	75% / NVP 0.75	
Delivery quantity	500 m reel	1000 m reel
Article number	STP-10,465-5	STP-10,465-10
E-number	101 741 118	101 741 108
Certificates	3-P certification	



Installation cable Draka SILVERLINE GOLD Cat.7

Data cable S/FTP up to 1500 MHz (former designation S/STP)

Cat.7A data cable with outstanding electrical and mechanical properties with high system reserves. Excellent shielding effect thanks to pair and braid shield.

Guaranteed thresholds in accordance with EN 50173-1, ISO/IEC 11801, EN 50288-4-1, IEC 61156-5. @Linie Kabel 20%:

Version	shielded, 4x2x0.58 mm	
Cable diameter	7,8 mm / AWG 23	
Sheath	Flame-resistant and halogen-free LS0H	
Attenuation (dB/100 m) @1000 MHz	62	
Colour of outer sheath	Gray, RAL 7035	
Relative propagation velocity	75% / NVP 0.75	
Delivery quantity	1000 m reel	
Article number	STP-10 475-10	
E-number	101 773 009	
Certificates	3-P certification	

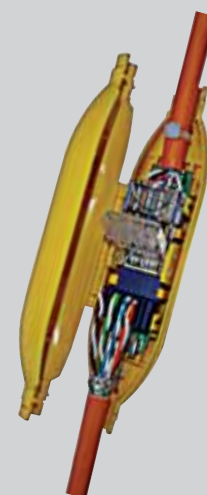


Extender ITplus® Cat.6

The Extender can be used to lengthen already installed cables or to reconnect defective ones, without replacing the cables.

Suitable for all 100 Ohm LAN applications, EIA/TIA T568 A and 568 B. For all standard installation cables. Overplugging without tools

Length x diameter	120 x 28 x 22
Permissible wire Ø	AWG 23–24
Cable diameter	8 mm max.
Overplugging cycles	>20
Contact material	Phosphor bronze, tin-coated
Plastics	Correspond to UL 94V-0
Consolidation Point	Cat.6 Class E according to ISO/IEC 11801
Standards	ISO/IEC 11801, EN50173
Article number	IES-10 100
E-number	970 200 008



Patch Panel ITplus®



Prepare cables



Connect wire guides



Click wire guides on jacks, snap in Keystone



Unshielded version
RJ45/u



Shielded version
RJ45/s



Telephone module
RJ11



Coupling module with
two-sided RJ45

COZ-06 320-0 966 735 558

Module rack ITplus® 19" 2HE for 15 module inserts, non-equipped, white (up to 60 Ports)

Modular distribution field for equipping with up to 15 4-unit Keystone module inserts. Allows equipping of up to a maximum of 60 ITplus® Keystone jacks on 2HE. Includes all mounting accessories. Low installation depth, attractive design, fast and easy installation.



COZ-06 321 973 391 314

Cable holder for module rack ITplus® 19" 2HE

for taking up cable tensions. Suitable for upward and downward cable outlets.



COZ-06 324-0 966 735 568

Module insert ITplus® for 4 Keystone ports, non-equipped, white

Insert for 19" 2HE modular panel for variable equipping with Keystone connecting technology. Integrated, low-impedance earthing contact of shielded Keystone jacks on the metal component rack. Colour: white.



COZ-06 327 966 735 588

Dummy module insert, white

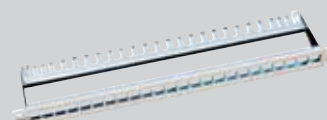
Dummy module for 19" 2HE modular panel for spare slots. Corresponds to space for 4 ports. Colour: white.



COU-51 116-0 966 731 608 Panel ITplus® 19" 1HE for 16 ports, non-equipped, white
 Distribution field for equipping with up to 16 ITplus® Keystone jacks.
 Suitable for shielded and unshielded connecting technology. Includes all mounting accessories. The port labelling is optimized for designation systems such as P-Touch or similar systems.
 Low installation depth, attractive design, and fast and easy installation.



COU-51,124-0 966 731 638 Panel ITplus® 19" 1HE for 24 ports, non-equipped, white
 Distribution field for equipping with up to 24 ITplus® Keystone jacks.
 Suitable for shielded and unshielded connecting technology. Includes all mounting accessories. The port labelling is optimized for designation systems such as P-Touch or similar systems.
 Low installation depth, attractive design, and fast and easy installation.
 Not compatible with RJ45 jacks of the ITplus® Cat.6 series I (module width).



COU-51,232-0 966 732 608 Panel ITplus® 19" 2HE for 32 ports, non-equipped, white
 Distribution field for equipping with up to 32 ITplus® Keystone jacks.
 Suitable for shielded and unshielded connecting technology. Includes all mounting accessories. The port labelling is optimized for designation systems such as P-Touch or similar systems.
 Low installation depth, attractive design, and fast and easy installation.



Dummy panel, white, includes mounting accessories

1HE	2HE	3HE	4HE
CAB-70 207	CAB-70 208	CAB-70 209	CAB-70 210
966 730 858	966 730 868	966 730 878	966 730 898



Marshalling panel, 4 rings, white, includes mounting accessories

1HE	2HE
CAB-70 201	CAB-70 213
966 730 848	966 730 888



CAB-90 520 533 570 200 Mounting set for 19" components, quantity of 4
 Set with 4 cage nuts, screws and M6 washers.



CAB-90,521 966 781 966 Mounting set for 19" components, quantity of 50
 Set with 50 cage nuts, screws and M6 washers.



COZ-06 901 305 960 449 Label sheet for ITplus® module inserts
 Paper size A4, paper quality 60 g, with 120 perforated designation strips for Keystone component inserts.
 Template can be downloaded on Internet at no cost.



Components

COU-90,010-61 966 702 766

Jack ITplus® RJ45 Cat.6A 10G, unshielded

For setting up Class D and E transmission links with up to 4 plug-in connections. Fulfils the requirements of ISO/IEC 11801 (2), EN 50173-1 (2), IEC 60603-7 and TIA/EIA568B.2-10 draft Cat.6A. For wire diameter AWG23-26. Parallel connection in pairs without crossing of pair in accordance with EIA/TIA 568A/B. Strain relief of cable by means of included cable ties, single strain relief of wires, >20 overplugging cycles. Gold-plated contacts on nickel, for >1000 insertion/withdrawal cycles. With integrated and captive dust protection cap. For Keystone brackets, fast and easy installation.



COS-90 010-61 966 702 866

Jack ITplus® RJ45 Cat.6A 10G, shielded

For setting up Class D and E (A) transmission links with up to 4 plug-in connections. Fulfils the requirements of ISO/IEC 11801 (2), EN 50173-1 (2), IEC 60603-7 and TIA/EIA568B.2-10 draft Cat.6A. For wire diameter AWG23-26. Parallel connection in pairs without crossing of pair in accordance with EIA/TIA 568A/B. Strain relief of cable by means of included cable ties, single strain relief of wires, >20 overplugging cycles. Gold-plated contacts on nickel, for >1,000 insertion/withdrawal cycles. With integrated and captive dust protection cap. For Keystone brackets, fast and easy installation.



SOH-12 101 977 801 048

Jack ITplus® RJ11 screw connection

For connecting cables (U72) for ADSL, ISDN and POTS. Meets requirements of IEC 60512-7. Screw connection with tension spring terminals enables parallel connection of wire diameters 0.5-1 mm² AWG22-27. 4 contacts 2,3,4,5 are reserved (USOC RJ11). Tension relief by means of cable ties, >20 overplugging cycles. Gold-plated contacts on nickel, for >1000 insertion/withdrawal cycles. With integrated and captive dust protection cap. For Keystone brackets, fast and easy installation.



IEU-11 100 977 830 098

Coupling ITplus® RJ45 Cat.6, unshielded

For setting up distribution fields and workplace boxes with two-sided RJ45 connection. Fulfils Cat.6/Class E Permanent Link and Channel requirements of ISO/IEC 11801, EN 50173, IEC 60603-7 and TIA/EIA 568B.2. Gold-plated contacts on nickel, for >750 insertion/withdrawal cycles. For Keystone brackets, fast and easy installation.



IES-11,100 977 800 098

Coupling ITplus® RJ45 Cat.6, shielded

For setting up distribution fields and workplace boxes with two-sided RJ45 connection. Fulfils Cat.6/Class E Permanent Link and Channel requirements of ISO/IEC 11801, EN 50173, IEC 60603-7 and TIA/EIA 568B.2. Gold-plated contacts on nickel, for >750 insertion/withdrawal cycles. Die cast housing with earthing contact. For Keystone brackets, fast and easy installation.



COU-93,001-61 966 733 808

Dummy insert ITplus®

Cover element for Keystone reserve slots, white.





Connecting boxes
ITplus®Standard, FLF

Connecting box ITplus® RJ45 Cat.6A, unshielded

>20 overplugging cycles, >1,000 insertion/withdrawal cycles, captive dust protection, Keystone, straight outlet, installation depth 39 mm.

1-way with reserve slot

2-way

Connecting box ITplus® RJ45 Cat.6A, shielded

>20 overplugging cycles, >1,000 insertion/withdrawal cycles, captive dust protection, Keystone, straight outlet, installation depth 39 mm.

1-way with reserve slot

2-way

Connecting box, non-equipped for ITplus® systems

2-way

	Complete apparatuses flush mounted PMI 58 mm white	Complete apparatuses surface-mounted AP x white	Complete apparatuses parapet duct IK 63 mm white	Complete apparatuses mounting FLF white
	COU-81,301-61 979 231 008	COU-81,101-61 979 031 008	COU-81,401-61 979 431 008	COU-81 501-61 979 631 008
	COU-81,302-61 979 232 008	COU-81,102-61 979 032 008	COU-81,402-61 979 432 008	COU-81,502-61 979 632 008
	COS-81,301-61 979 201 008	COS-81 101-61 979 001 008	COS-81,401-61 979 401 008	COS-81 501-61 979 601 008
	COS-81 302-61 979 202 008	COS-81,102-61 979 002 008	COS-81,402-61 979 402 008	COS-81,502-61 979 602 008
	COU-81,300-61 979 230 008	COU-81,100-61 979 030 008	COU-81,400-61 979 430 008	COU-81,500-61 979 630 008

**Connecting boxes ITplus®
EDIZIOdue**

Connecting box ITplus® RJ45 Cat.6A, unshielded

>20 overplugging cycles, >1,000 insertion/withdrawal cycles, captive dust protection, Keystone, flat outlet, installation depth 39 mm.

1-way with reserve slot

Complete apparatuses flush mounted FML, white



COU-83,341-61
879 280 000

Complete apparatuses surface-mounted FX 54, white



COU-83,141-61
879 080 000

Complete apparatuses parapet duct FKE



COU-83 441-61
879 480 000

2-way

COU-83,342-61
879 282 000

COU-83,142-61
879 081 000

COU-83,442-61
879 481 000

Connecting box ITplus® RJ45 Cat.6A, shielded

>20 overplugging cycles, >1,000 insertion/withdrawal cycles, captive dust protection, Keystone, flat outlet, installation depth 39 mm.

1-way with reserve slot



COS-83,341-61
879 260 000



COS-83,141-61
879 060 000



COS-83,441-61
879 460 000

2-way

COS-83,342-61
879 262 000

COS-83,142-61
879 061 000

COS-83,442-61
879 461 000

Connecting box, non-equipped for ITplus® systems, flat outlet

2-way



COU-83,340-61
878 260 000



COU-83,140-61
878 060 000



COU-83,440-61
878 487 000

Connecting box, non-equipped for ITplus® systems

2-way



COU-83,300-61
878 270 000



COU-83,100-61
878 070 000



COU-83,400-61
878 477 000

Jacks ITplus® (see also page 8)



Jack ITplus® RJ45 Cat.6A 10G, unshielded
COU-90 010-61 966 702 766



Jack ITplus® RJ45 Cat.6A 10G, shielded
COS-90 010-61 966 702 866



Jack ITplus® RJ11 screw connection
SOH-12 101 977 801 048



Dummy insert ITplus®
COU-93 001-61 966 733 808

COZ-06 902 966 799 966

A4 label sheet for ITplus® connecting boxes

Paper quality 60 g, with 120 perforated and self-adhesive designation labels. Template can be downloaded on Internet at no cost.

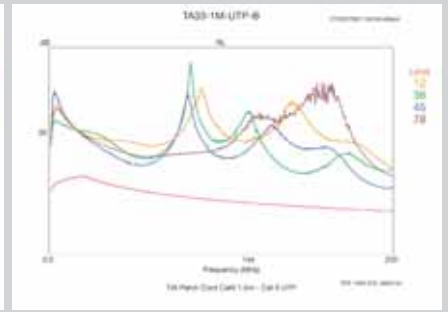
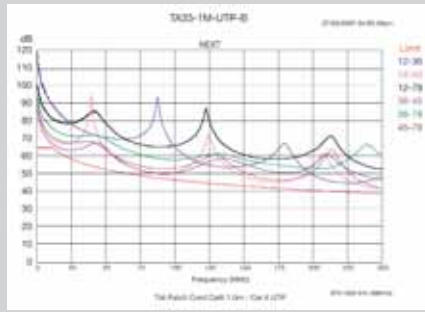


COZ-06 906 966 732 066

AP connection box, 6-way

Keystone, sheet steel, white RAL 9010 for optional equipping with ITplus® Keystone inserts. Dimensions 38x115x165 mm. Rear side with 3 cable inlets, one each on left, right and bottom. Including 4 covers for reserve inlets.





Patch cable ITplus® RJ45 Cat.6

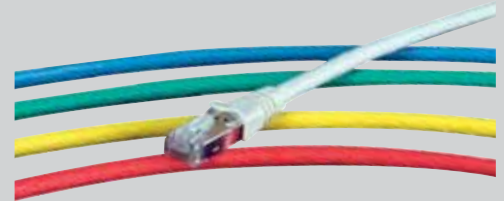
Marshalling cable with outstanding electrical and mechanical properties: FRNC/LSOH (Flame Retardant Non Corrosive/Low Smoke Zero Halogen). Clear differentiation of the different services in the patch fields of cabinets and distribution systems. Guaranteed thresholds in accordance with ISO/IEC 11801, EN 50173 and EN 50288-4-2, exceeds Class E.

Patch cables are labelled on both ends with length and article number.

Hi-performance RJ45 by means of separate pair guide (pin 4/5).

Patch cable ITplus® RJ45/s-RJ45/s Cat.6

Version shielded, AWG26
 Cable type Uninet flex 7702 4P 1200 MHz S/FTP
 Plug type ITplus® RJ45, narrow design
 Anti-kink protection ITplus® sprayed
 Diameter 6 mm



	gray	red	yellow	green	blue
1 m	G6S-23 010-GR 101 375 318	G6S-23 010-RT 101 375 418	G6S-23 010-GE 101 375 118	G6S-23 010-GN 101 375 218	G6S-23 010-BL 101 375 018
2 m	G6S-23,020-GR 101 375 328	G6S-23,020-RT 101 375 428	G6S-23,020-GE 101 375 128	G6S-23,020-GN 101 375 228	G6S-23,020-BL 101 375 028
3 m	G6S-23,030-GR 101 375 338	G6S-23,030-RT 101 375 438	G6S-23,030-GE 101 375 138	G6S-23,030-GN 101 375 238	G6S-23,030-BL 101 375 038
4 m	G6S-23,040-GR 101 375 348	G6S-23,040-RT 101 375 448	G6S-23,040-GE 101 375 148	G6S-23,040-GN 101 375 248	G6S-23,040-BL 101 375 048
5 m	G6S-23,050-GR 101 375 358	G6S-23,050-RT 101 375 458	G6S-23,050-GE 101 375 158	G6S-23,050-GN 101 375 258	G6S-23,050-BL 101 375 058
7 m	G6S-23,070-GR 101 375 378	G6S-23,070-RT 101 375 478	G6S-23,070-GE 101 375 178	G6S-23,070-GN 101 375 278	G6S-23,070-BL 101 375 078

Other lengths and colours on request

Patch cable ITplus® RJ45/u-RJ45/u Cat.6

Version unshielded, AWG24
 Cable type Uninet flex 602 4P 300 MHz U/UTP
 Plug type ITplus® RJ45, narrow design
 Anti-kink protection ITplus®
 Diameter 5.1 mm



	gray	red	yellow	green	blue
1 m	G6U-23 010-GR 101 376 318	G6U-23 010-RT 101 376 418	G6U-23 010-GE 101 376 118	G6U-23 010-GN 101 376 218	G6U-23 010-BL 101 376 018
2 m	G6U-23,020-GR 101 376 328	G6U-23,020-RT 101 376 428	G6U-23,020-GE 101 376 128	G6U-23,020-GN 101 376 228	G6U-23,020-BL 101 376 028
3 m	G6U-23,030-GR 101 376 338	G6U-23,030-RT 101 376 438	G6U-23,030-GE 101 376 138	G6U-23,030-GN 101 376 238	G6U-23,030-BL 101 376 038
4 m	G6U-23,040-GR 101 376 348	G6U-23,040-RT 101 376 448	G6U-23,040-GE 101 376 148	G6U-23,040-GN 101 376 248	G6U-23,040-BL 101 376 048
5 m	G6U-23,050-GR 101 376 358	G6U-23,050-RT 101 376 458	G6U-23,050-GE 101 376 158	G6U-23,050-GN 101 376 258	G6U-23,050-BL 101 376 058
7 m	G6U-23,070-GR 101 376 378	G6U-23,070-RT 101 376 478	G6U-23,070-GE 101 376 178	G6U-23,070-GN 101 376 278	G6U-23,070-BL 101 376 078

Other lengths and colours on request



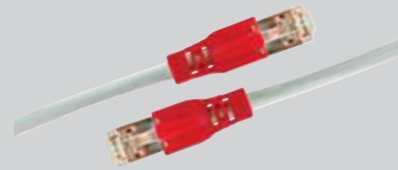
Patch cable ITplus® RJ45/s-RJ45/s Cat.6, colour markable

Version shielded, AWG26
Cable type ITplus® flex 4P 600 MHz
Plug type ITplus® RJ45, narrow design
Anti-kink protection ITplus® sprayed, colour markable
Diameter 6 mm



Patch cable ITplus® RJ45/u-RJ45/u Cat.6, colour markable

Version unshielded, AWG24
Cable type ITplus® flex 4P 300 MHz
Plug type ITplus® RJ45, narrow design
Anti-kink protection ITplus® sprayed, colour markable
Diameter 5.1 mm



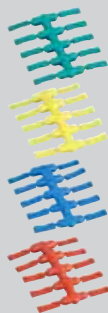
Patch cable ITplus® Cat.6 with exchangeable caps

Version shielded, AWG26/unshielded, AWG24
Cable type ITplus® flex 4P 400 MHz
Plug type ITplus® RJ45
Caps without, can be selected optionally
Diameter 6 mm

	gray	gray	shielded gray	unshielded gray
0.5 m	IPS-60 005 101 389 098	IPU-60 005 101 388 098	COS-22 005-OH 101 606 038	COU-22 005-OH 101 626 038
1 m	IPS-60,010 101 389 108	IPU-60,010 101 388 108	COS-22,010-OH 101 606 138	COU-22,010-OH 101 626 138
1.5 m	IPS-60,015 101 389 118	IPU-60,015 101 388 118	COS-22,015-OH 101 606 238	COU-22,015-OH 101 626 238
2 m	IPS-60,020 101 389 128	IPU-60,020 101 388 128	COS-22,020-OH 101 606 338	COU-22,020-OH 101 626 338
2.5 m	IPS-60,025 101 389 138	IPU-60,025 101 388 138	COS-22,025-OH 101 606 438	COU-22,025-OH 101 626 438
3 m	IPS-60,030 101 389 148	IPU-60,030 101 388 148	COS-22,030-OH 101 606 538	COU-22,030-OH 101 626 538
4 m	IPS-60,040 101 389 158	IPU-60,040 101 388 158	COS-22,040-OH 101 606 638	COU-22,040-OH 101 626 638
5 m	IPS-60,050 101 389 168	IPU-60,050 101 388 168	COS-22,050-OH 101 606 738	COU-22,050-OH 101 626 738
7.5 m	IPS-60,075 101 389 178	IPU-60,075 101 388 178	COS-22,075-OH 101 606 838	COU-22,075-OH 101 626 838
10 m	IPS-60,100 101 389 188	IPU-60,100 101 388 188	COS-22,100-OH 101 606 938	COU-22,100-OH 101 626 938
15 m	IPS-60,150 101 389 198	IPU-60,150 101 388 198	COS-22,150-OH -	COU-22,150-OH -
20 m	IPS-60,200 101 389 208	IPU-60,200 101 388 208	COS-22,200-OH -	COU-22,200-OH -

Colour marker for ITplus® patch cables, colour markable

red	IPI-10-RT 977 901 168
yellow	IPI-10-GE 977 901 158
green	IPI-10-GN 977 901 148
blue	IPI-10-BL 977 901 128
violet	IPI-10-VI -



Exchangeable caps for patch cables ITplus® Cat.6

gray	STP-29 014-GR 120 550 048	brown	STP-29 014-BR 120 550 018
red	STP-29 014-RT 120 550 058	orange	STP-29 014-OR 120 550 098
yellow	STP-29 014-GE 120 550 028	black	STP-29 014-SW 120 550 068
green	STP-29 014-GN 120 550 038	violet	STP-29 014-VI 120 550 078
blue	STP-29 014-BL 120 550 008	white	STP-29 014-WS 120 550 088



Sales :



Elbro AG
Swiss Technology Company
Gewerbstrasse 4
CH-8162 Steinhilber/Switzerland
Telefon: +41 (0)44 854 73 00
Telefax: +41 (0)44 854 73 01
Internet: www.elbro.com
e-mail: info@elbro.com

Available from your wholesaler!