

Patch cable ITplus® RJ45 Cat.6

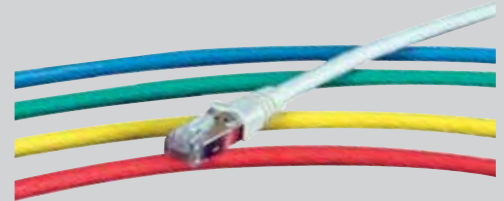
Marshalling cable with outstanding electrical and mechanical properties: FRNC/LSOH (Flame Retardant Non Corrosive/Low Smoke Zero Halogen). Clear differentiation of the different services in the patch fields of cabinets and distribution systems. Guaranteed thresholds in accordance with ISO/IEC 11801, EN 50173 and EN 50288-4-2, exceeds Class E.

Patch cables are labelled on both ends with length and article number.

Hi-performance RJ45 by means of separate pair guide (pin 4/5).

Patch cable ITplus® RJ45/s-RJ45/s Cat.6

Version shielded, AWG26
 Cable type Uninet flex 7702 4P 1200 MHz S/FTP
 Plug type ITplus® RJ45, narrow design
 Anti-kink protection ITplus® sprayed
 Diameter 6 mm



	gray	red	yellow	green	blue
1 m	G6S-23 010-GR 101 375 318	G6S-23 010-RT 101 375 418	G6S-23 010-GE 101 375 118	G6S-23 010-GN 101 375 218	G6S-23 010-BL 101 375 018
2 m	G6S-23,020-GR 101 375 328	G6S-23,020-RT 101 375 428	G6S-23,020-GE 101 375 128	G6S-23,020-GN 101 375 228	G6S-23,020-BL 101 375 028
3 m	G6S-23,030-GR 101 375 338	G6S-23,030-RT 101 375 438	G6S-23,030-GE 101 375 138	G6S-23,030-GN 101 375 238	G6S-23,030-BL 101 375 038
4 m	G6S-23,040-GR 101 375 348	G6S-23,040-RT 101 375 448	G6S-23,040-GE 101 375 148	G6S-23,040-GN 101 375 248	G6S-23,040-BL 101 375 048
5 m	G6S-23,050-GR 101 375 358	G6S-23,050-RT 101 375 458	G6S-23,050-GE 101 375 158	G6S-23,050-GN 101 375 258	G6S-23,050-BL 101 375 058
7 m	G6S-23,070-GR 101 375 378	G6S-23,070-RT 101 375 478	G6S-23,070-GE 101 375 178	G6S-23,070-GN 101 375 278	G6S-23,070-BL 101 375 078

Other lengths and colours on request

Patch cable ITplus® RJ45/u-RJ45/u Cat.6

Version unshielded, AWG24
 Cable type Uninet flex 602 4P 300 MHz U/UTP
 Plug type ITplus® RJ45, narrow design
 Anti-kink protection ITplus®
 Diameter 5.1 mm



	gray	red	yellow	green	blue
1 m	G6U-23 010-GR 101 376 318	G6U-23 010-RT 101 376 418	G6U-23 010-GE 101 376 118	G6U-23 010-GN 101 376 218	G6U-23 010-BL 101 376 018
2 m	G6U-23,020-GR 101 376 328	G6U-23,020-RT 101 376 428	G6U-23,020-GE 101 376 128	G6U-23,020-GN 101 376 228	G6U-23,020-BL 101 376 028
3 m	G6U-23,030-GR 101 376 338	G6U-23,030-RT 101 376 438	G6U-23,030-GE 101 376 138	G6U-23,030-GN 101 376 238	G6U-23,030-BL 101 376 038
4 m	G6U-23,040-GR 101 376 348	G6U-23,040-RT 101 376 448	G6U-23,040-GE 101 376 148	G6U-23,040-GN 101 376 248	G6U-23,040-BL 101 376 048
5 m	G6U-23,050-GR 101 376 358	G6U-23,050-RT 101 376 458	G6U-23,050-GE 101 376 158	G6U-23,050-GN 101 376 258	G6U-23,050-BL 101 376 058
7 m	G6U-23,070-GR 101 376 378	G6U-23,070-RT 101 376 478	G6U-23,070-GE 101 376 178	G6U-23,070-GN 101 376 278	G6U-23,070-BL 101 376 078

Other lengths and colours on request



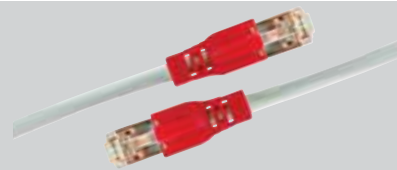
Patch cable ITplus® RJ45/s-RJ45/s Cat.6, colour markable

Version shielded, AWG26
Cable type ITplus® flex 4P 600 MHz
Plug type ITplus® RJ45, narrow design
Anti-kink protection ITplus® sprayed, colour markable
Diameter 6 mm



Patch cable ITplus® RJ45/u-RJ45/u Cat.6, colour markable

Version unshielded, AWG24
Cable type ITplus® flex 4P 300 MHz
Plug type ITplus® RJ45, narrow design
Anti-kink protection ITplus® sprayed, colour markable
Diameter 5.1 mm



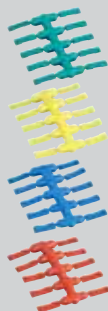
Patch cable ITplus® Cat.6 with exchangeable caps

Version shielded, AWG26/unshielded, AWG24
Cable type ITplus® flex 4P 400 MHz
Plug type ITplus® RJ45
Caps without, can be selected optionally
Diameter 6 mm

	gray	gray	shielded gray	unshielded gray
0.5 m	IPS-60 005 101 389 098	IPU-60 005 101 388 098	COS-22 005-OH 101 606 038	COU-22 005-OH 101 626 038
1 m	IPS-60,010 101 389 108	IPU-60,010 101 388 108	COS-22,010-OH 101 606 138	COU-22,010-OH 101 626 138
1.5 m	IPS-60,015 101 389 118	IPU-60,015 101 388 118	COS-22,015-OH 101 606 238	COU-22,015-OH 101 626 238
2 m	IPS-60,020 101 389 128	IPU-60,020 101 388 128	COS-22,020-OH 101 606 338	COU-22,020-OH 101 626 338
2.5 m	IPS-60,025 101 389 138	IPU-60,025 101 388 138	COS-22,025-OH 101 606 438	COU-22,025-OH 101 626 438
3 m	IPS-60,030 101 389 148	IPU-60,030 101 388 148	COS-22,030-OH 101 606 538	COU-22,030-OH 101 626 538
4 m	IPS-60,040 101 389 158	IPU-60,040 101 388 158	COS-22,040-OH 101 606 638	COU-22,040-OH 101 626 638
5 m	IPS-60,050 101 389 168	IPU-60,050 101 388 168	COS-22,050-OH 101 606 738	COU-22,050-OH 101 626 738
7.5 m	IPS-60,075 101 389 178	IPU-60,075 101 388 178	COS-22,075-OH 101 606 838	COU-22,075-OH 101 626 838
10 m	IPS-60,100 101 389 188	IPU-60,100 101 388 188	COS-22,100-OH 101 606 938	COU-22,100-OH 101 626 938
15 m	IPS-60,150 101 389 198	IPU-60,150 101 388 198	COS-22,150-OH -	COU-22,150-OH -
20 m	IPS-60,200 101 389 208	IPU-60,200 101 388 208	COS-22,200-OH -	COU-22,200-OH -

Colour marker for ITplus® patch cables, colour markable

red	IPI-10-RT 977 901 168
yellow	IPI-10-GE 977 901 158
green	IPI-10-GN 977 901 148
blue	IPI-10-BL 977 901 128
violet	IPI-10-VI -



Exchangeable caps for patch cables ITplus® Cat.6

gray	STP-29 014-GR 120 550 048	brown	STP-29 014-BR 120 550 018
red	STP-29 014-RT 120 550 058	orange	STP-29 014-OR 120 550 098
yellow	STP-29 014-GE 120 550 028	black	STP-29 014-SW 120 550 068
green	STP-29 014-GN 120 550 038	violet	STP-29 014-VI 120 550 078
blue	STP-29 014-BL 120 550 008	white	STP-29 014-WS 120 550 088



Sales :



Elbro AG
Swiss Technology Company
Gewerbstrasse 4
CH-8162 Steinhilber/Switzerland
Telefon: +41 (0)44 854 73 00
Telefax: +41 (0)44 854 73 01
Internet: www.elbro.com
e-mail: info@elbro.com

Available from your wholesaler!